

FROM THE GENERAL BOARD

Elections were held and the new officers for the 1981-82 year are:

- PRESIDENT
Ann McElroy
- FIRST VICE PRESIDENT
Duchess Wynn
- SECOND VICE PRESIDENT
Letty Clark
- RECORDING SECRETARY
Betty Hollingsworth
- CORRESPONDING SECRETARY
Helen Carpenter
- TREASURER
Sandy Jaeger
- ASSISTANT TREASURER
Toni Cavanagh



It was voted to spend approximately \$3,500.00 for 12 to 14 very much needed additional parking spaces at the Thrift Shop.

The Merry Token Shop, under the direction of our new Chairman, Cornie Burckhardt, is offering many new items, including Cornie's own silk flower arrangements. Do your pocketbook a favor and visit both our Shops for the best "buys" in town!

Just a reminder - ALL ANNUAL REPORTS ARE DUE, IN TRIPLICATE, BY THE ANNUAL LUNCHEON, ALL TREASURER'S REPORTS BY JUNE 30th, AND MEMBERSHIP LISTS AS SOON AS POSSIBLE, UPDATED WITH NEW AUXILIARY OFFICERS.

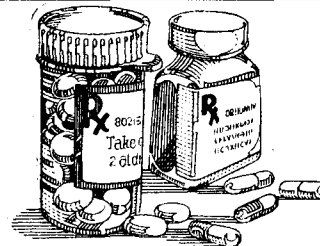
The Man O' War Ball netted approximately \$5,000.00. It was a lovely, enjoyable evening.

REMEMBER ANNUAL LUNCHEON-JUNE 4th

ANN McELROY
PRESIDENT,
ASSOCIATED AUXILIARIES

PRESCRIPTION FOR A

FESTIVE
EVENING



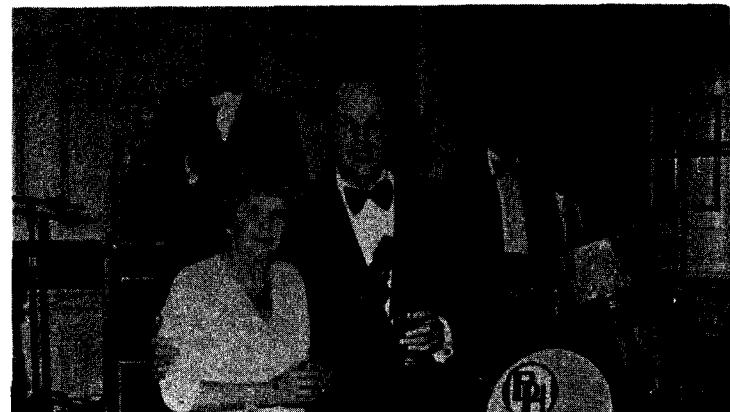
On Saturday, April 11th, The Gold Ballroom at the Hotel duPont was the setting for the 23rd Annual Man' O' War Ball. WHAT A GALA EVENING IT WAS! Beautifully gowned ladies, handsome gentlemen, excellent food, toe tapping music, made for a very pleasurable time!

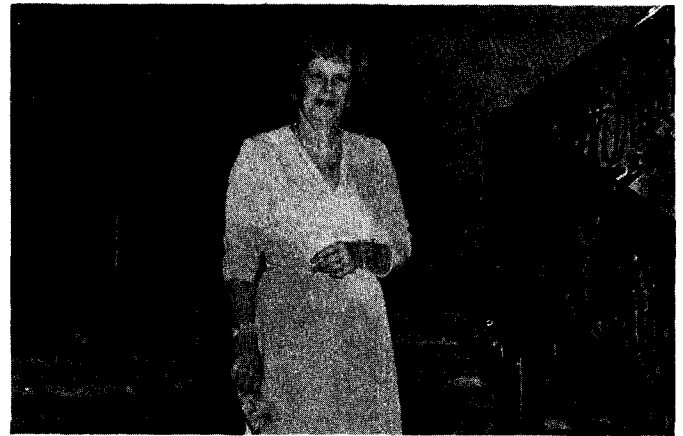
Chairman, Ann Van Norden did a terrific job arranging the Ball, and will henceforth be known as the "Hostess With The Mostest".

The Roto gravure section presents our Chairman, Ann Van Norden, President of RMH Donald Laughlin, President of the Medical Staff, Dr. Craig Whitaker, and guests.

The Associated Auxiliaries wish to thank all that support this annual function by attending and also contributing as a Patron. This kind of

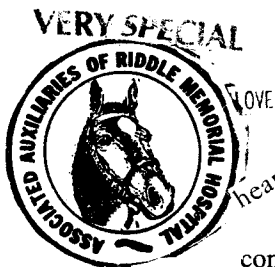
support is what stimulates us to continue our work for Riddle Memorial Hospital.





The Family Album





Thank you for caring enough to give of yourselves. *With Love to* Editor's Diary happiness
Middleway Our Readers! WE NEED YOU!!! "THANK YOU!"

continuing success of our hospital!

It's All in a Woman's Day

A timely briefing on people, places, ideas and events

"FASCINATING"

Thank you for caring about Riddle.

West Wing

Long-Range Development Plan

Project

another step in Riddle Hospital improvements program.



★ Love

Special events

GET IN ON THE FUN

The Volunteer Brigade

PROOF-POSITIVE

WE'LL VOTE FOR THE RIDDLE LADIES

Gratitude

"THE FAMILY"

DATELINE: TOMORROW

PRESIDENT'S ADDRESS

JULY, 1980

Our new President, Ann McElroy, made several very interesting points in her remarks at our Annual Luncheon. She stressed the need to increase our membership and to raise funds

Ann said, "People like us, who work for the benefit of others, are now an endangered species and may be on the road to extinction. Truer words were never spoken and we must take heed of them. Ann suggested we all bring a friend to an Auxiliary meeting, and encourage her to become a member.

Fund raising has been our forte for years. Ann stated that "Riddle is entering a new growth stage, and needs our help more than ever. As the Hospital grows, so must we!"

ANN MCELROY, PRESIDENT

We appreciate Chances 1980 COUNTRY FAIR CHAIRMAN loud applause.

Mrs. William Gross, Chairman
Mrs. Charles Webb, Co-Chairman

Families Together



FAIR TIME

Two dedicated ladies,



(Jayne)

Mrs. Arthur Schneider

perennial Donald Laughlin, Preside

A FAMILY AFFAIR

We are proud to be a part of this Family

WE ALL WORSHIP THE GROUND THE FAIR'S RUN ON!

enjoy the rides and the games—

HELP WANTED COME ONE - COME ALL

THE 23rd ANNUAL COUNTRY FAIR RIDDLE MEMORIAL HOSPITAL

TAILGATE SALE Best wishes a truly remarkable record.

Mrs. William Laimbeer
Chairman

The Lobby of the Hospital was decorated for Christmas by the Auxiliaries. We sincerely hope everyone enjoyed it.

The RMH TEL-MED Educational Program since November 20th, 1978.

WOMAN OF THE YEAR



Past President Mrs. Peter Palena passing the gavel to President Mrs. Samuel McElroy

VOLUNTEERS UNDERTAKE NEW ROLE WITH SURGERY PATIENTS

Praise Stan Albright
congratulate FAMILY
Elma Albright
1980 Fair Chairman



Mrs. George Burckhardt

Mrs. Joseph Dubolino

THE MERRY TOKEN SHOP Measure of Greatnes



"Oh, come now, Mother—he won't forget."

1981 Fair CHAIRMEN gre-gar-lous

outstanding

Best wishes

a truly remarkable record.

1981 Fair

CHAIRMEN

gre-gar-lous

Measure of Greatnes

AUXILIARY LUNCHEON AT SPRINGHAVEN

IT'S ALL IN A WOMAN'S DAY
What's Happening

We are very proud and appreciative

BOARD OF DIRECTORS COCKTAIL PARTY

family Album support dedication

ARONMINK COUNTRY CLUB

its working

Thanks to you

OUR GAL FRIDAY: Jackie Dowd, Secretary to Associated Auxiliaries

HEALTH CARE CENTER

KEYS TO CONTENTMENT

Love Faith Hope Grace

New Year!

In the near future acclaim

Just living on past glories and tradition is not enough

Associated Auxiliaries NURSES TO BE HONORED

AT RMH RECEPTION

grateful to all

A truly great hospital cannot stand still.

steadfast service

who shot J.R.!!

WORTHY OF NOTE

Now, as you know, the new West Wing of the Hospital will soon be under construction. In order to set the pace for fund-raising for this project, the Associated Auxiliaries have voted to pledge \$500,000.00 over the next 5 fiscal years. For this pledge, we will be credited with an entire floor in the West Wing.....a super highly visible contribution!

thanks.

The Thrift Shop tells us that the help from Auxiliaries on Saturdays has been great!!!! Let's keep up our support for our best money maker. A dedicated woman

fund-raising

GROUND BREAKING FOR RIDDLE MEMORIAL HOSPITAL WEST WING, DECEMBER 18th

"I pledge allegiance."

hours of volunteer work

PRE-BALL MAN O' WAR PARTY

Fund Growing

LOVE Personality

Welcome

Back

Hostages!

WOMEN ON THE JOB:

"Salute the Past - Support the Future"

Astronauts

control the

touchdown

our volunteers

AN EVENING

TO REMEMBER

UNFORGETTABLE

MAN O'WAR BALL a success

PRESIDENT

Best Wishes

On March 31st, the ASSOCIATED AUXILIARIES saluted Riddle's physicians by presenting each with a red carnation to say "THANKS" for their service and dedication.

H. Craig Whitaker, M.D. President Medical Staff

Thank you Ann Van Norden and your Committee for a GREAT job on the MAN O' WAR BALL.

Riddle Hospital about all of you.

Dr. Craig Whitaker obviously subscribes to the theory, "Laughter is the best medicine." GINGER HAPPY MOTHER'S DAY

THE MONEY SAVER RIDDLE THRIFT SHOP Help Wanted



Mrs. Francis LaChette - Program Co-chairman



President of Riddle Hospital

A lively crowd gathered at Dr. Peter Palena and Rosemary's home on Sunday, February 10th, for the "Pre-Ball Cocktail Party," - and a lovely party it was! If the gay three hours enjoyed by the guests are any indications of the wonderful time you will have at the Ball, be sure you don't miss it.



thanks A Touch Of Class" A delightful evening Mrs. William Van Norden The Associated Auxiliaries

splendor of Riddle Memorial Hospital

great hostesses TWENTY-THIRD ANNUAL

MAN O'WAR BALL a success

Mrs. Sam Rolison

Country Fair

Riddle Memorial Hospital will salute their volunteers for the many hours of their time which they have contributed during National Volunteer Recognition Week

Reagan victory

HAPPY VACATION TO ALL!!!

FUN for the WHOLE FAMILY!

You are cordially invited
to attend the
Annual Luncheon
and
Installation of Officers
of the
Associated Auxiliaries of
Riddle Memorial Hospital
on Thursday, June 4th
at the
Springhaven Club
Wallingford, Pennsylvania

Cocktails 11:30 a.m.

Luncheon 12:30 p.m. \$6.00 per person



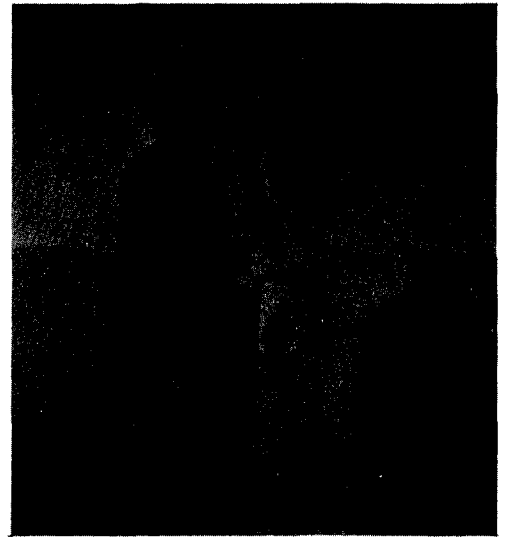
ENJOY!!! - Installation of officers, delicious luncheon, lovely setting. A real Fashion Show to see all our ladies in their finery. A lovely way to spend an afternoon.



BLESSED ARE THE GRANDMOTHERS

Helen Rendin (Dr. Larry Rendin's wife) came to visit her son, patient Chip Rendin, and brought her granddaughter, Abigail, to see her daddy too. Abigail, a perfect little doll, evidently didn't think too highly of RMH, and proclaimed so, vigorously. Abigail is Dr. & Mrs. Rendin's fifth grandchild.

'When Love and Skill
Work Together,
Expect a Miracle'



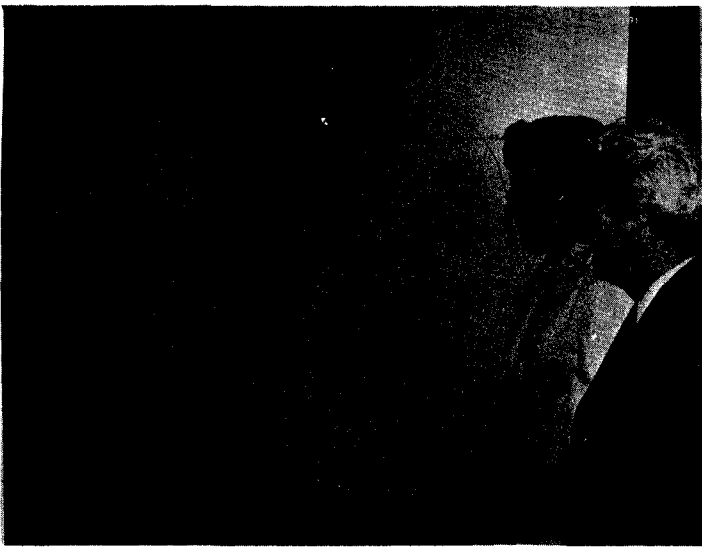
The Easter Bunny gave an impromptu Egg Nog Party in the Merry Token Shop on Good Friday afternoon. He found it a bit difficult to pour with his paws, so Chairman Cornie Burckhardt, acted as his hostess. The Busy Bunny, had a chance to wish a Happy Easter to many customers and employees. President, Donald Laughlin, Don Newell, Lori Shockley, Ginger and Bob Lobb, George Bueckhardt, just to mention a few. The week prior to Easter, the Bunny, and an able assistant pushed a gaily decorated Cart throughout the Hospital, so that the patients could purchase Easter tokens.

The Merry Token Shop has been Spring house-cleaned, and is looking lovely. A beautiful glass display rack is showing off a new line of merchandise to great advantage. Do drop into the Shop and browse around. You will find some unique and charming gifts.

The Shop is starting a "Gift Club", \$1.00 a week for 15 weeks. Gift Certificates are also available for your convenience.

Silk flower arrangements are being sold in the Shop. Cornie has been creating these beautiful pieces herself. It is a time consuming effort, and she would really appreciate some help. If you enjoy arranging flowers, and have a few hours a week, call Cornie, LO 6-9400, Ext. 3335 (Shop).





Representatives of the Associated Auxiliaries of Riddle Memorial Hospital paint in the symbolic horseshoe to the amount of the Auxiliaries' \$500,000.00 pledge to the New Dimensions Fund Campaign. The pledge represents 36% of the Campaign goal. From left, Mrs. Samuel A. McElroy, President, Mrs. N. Scott Wynn, First Vice President; and Mrs. Valdor E. Clark, Second Vice President.

The poster, located in the Hospital's main lobby, now reads \$813,723.00 toward the \$1.4 million goal.

RIDDLE RAP

SPRING IS WONDERFUL!!! - You can watch the farmers and the golfers both begin their plowing!....Excellent coverage from Publicity Chairman, MARY MALLON....A SELL OUT for the THRIFT SHOP FASHION SHOW held at Mendenhall Inn. MIDDLETOWN AUXILIARY made over \$700.00. Behind the scenes went many hours of work. "Thank You" - Marge Zultewicz, Ginny Miller, Jinks Jones and Jayne Schneider, and everyone who made this annual event a huge success...ELLIE WYNNE'S daughter, Joanne, graduated from Cedar Crest College with a BS in Nursing....KITTY & DICK WAGNER mixed business with pleasure and enjoyed a great trip to San Diego, California....ELLIE AND ANDY BIKER enjoyed their stay in Williamsburg, Virginia."Thrift Shop bargains are comparable to any The Pottery has to offer!" says Ellie....GLADYS KELLER returned from Connecticut and Virginia....ARVO VARIO will be an Inn Keeper this summer at Cape May, New Jersey....TOM AND GLORIA JONES went to visit family in Hollidaysburg....MARIE SPANO has returned from Italy and Switzerland.....

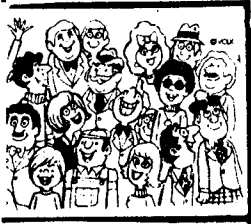
ALICE WILKINSON spent three weeks in Lewes, Delaware remodeling her new summer home..... LAURA LAND returned from Greensburg, Pa..... Speedy recovery to JOHN FUREY.....LORNA FISHER has returned from the Hospital.....ELMA ALBRIGHT - happiness is having your well again.....Dear LEFTY PAGE - you are very much in our thoughts. Just a little longer until brighter days are here again.....LIMA AUXILIARY has two new members, CHARLENE GLAZIER and PAULINE HIPPLE. Lima had a successful Lobby Sale. We thank our many Riddle friends and employees for their support.....ELMA & STAN ALBRIGHT'S grandson will graduate from John-Hopkins Medical School. He has been selected to serve his Internship and Residency at John-Hopkins. ELMA would like to take this opportunity to thank all her friends and the people of Riddle who gave many expression of love and kindness during her stay at Riddle.....Best Wishes to CATHERINE WOOD, RN. We are all wishing you well, and reminding you too of how much and how often we think of you and miss you.....DR. PETER AND ROSEMARY'S son Peter received most outstanding contribution to Varsity Wrestling at Archmere Academy Happy Graduation, Peter.....ANN VAN NORDEN had a luncheon for her Ball Committee. Ask Ann (Julia Childs) for her casserole recipe. OUT OF THIS WORLD!!!.....NETHER PROVIDENCE has a new member, MARGARET KALMAN.....Keep June 18th open for a Swim and Luncheon Party at MARY MALLON'S - 11:30 AM - \$\$5.00. Bring your own Pool Chair, and by all means your own bikini! Call Doris Magee (565-1999) for reservations. We will see you "pool side"....ROSE TREE is so happy to have ELIZABETH HAZEN, RN as a new member.....Young John Cruice, NINA & JOHN CRUICE'S son had a tonsilectomy. WHAT A NEAT LITTLE GUY!.....GINNY HOOPES has returned from a visit with Billie and Bill Patterson in Lake Worth, Fla. Billie is well and happy, (Associated Member of Springhaven Auxiliary).....The THRIFT SHOP closes July 23rd - opens for Consignment, August 25th - and opens for "fantastic bargains" September 8th. We'll see you in line.....Speedy recovery to Jim Hollingsworth, BETTY & JIM HOLLINGSWORTH'S son....FLORENCE SHIELDS is appearing in D'ie Feddemaus which she performed in twenty one years ago with Rose Valley Chorus. Everywhere she goes she spreads cheer, good will and happiness in MEDICAL TERMS she is know as a "carrier".... We were filled to the brim with grim that JOSEPHINE JENCKES was in the Hospital. Happy to hear that she is feeling better....BETTY RAMAKIA is home from the Hospital...COUNTRY FAIR plans are coming along beautifully, thank to SALLY McPHILLIMY and her Committee..On

RIDDLE RAP - Continued

behalf of the ASSOCIATED AUXILIARIES we wish to thank you for advertising in our COUNTRY FAIR PROGRAM. Your generosity adds to the total success of the FAIR, and ensures us the continued support to RMH so that it can maintain the high quality of patient care and services rendered. PLEASE WORK ON YOUR ADS GIRLS. We look forward to your continued support....

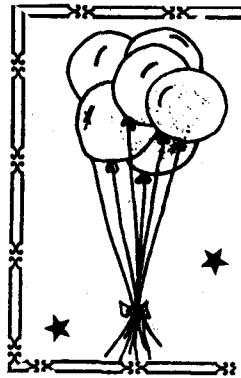
WORKING TOGETHER

COUNTRY FAIR DATES - SEPTEMBER 18th, 19th and 20th



FUN FOR ALL!! Something special - something extra -- balloons galore. Plans are still in the air - more details to follow.

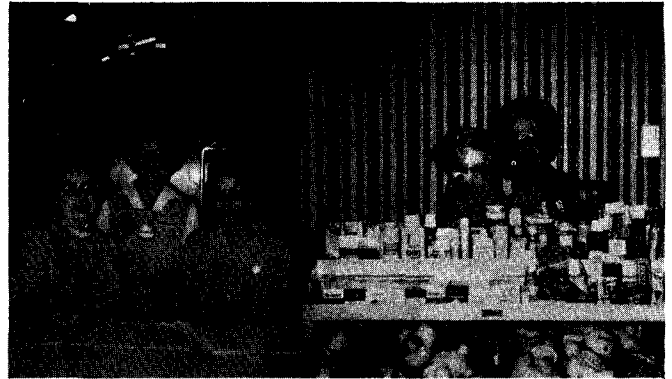
SALLY McPHILLIMY, RUTH SNELL and Husbands enjoyed their vacation at Nags Head..... FLO FULLMER spent Easter in Vale, Colorado getting in some fine skiing.....In closing.....a special prayer for a society free of violence.



VOLUNTEER LUNCHEON was a huge success, thanks to BERNICE PAGE, Director of Volunteers and EMILY BECK, Assistant Director of Volunteers. THE HAPPINESS YOU GIVE AWAY RETURNS TO SHINE ON YOU.

The MORE of everything you share
The MORE you'll always have to spare
For only what you GIVE AWAY
Enriches you from day to day!

DEDICATED VOLUNTEERS



PRESIDENT'S MESSAGE

This last year as President has been a very busy and rewarding experience for me, and I want to thank you all for your vote of confidence in having me back for another term.

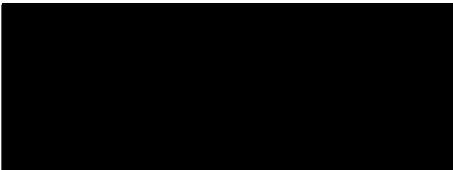
Invitations to the Annual Luncheon-Installation have been sent to all Auxilians; and it has been priced to encourage everyone to attend. There are Auxilians I have never met, and this would be a fine opportunity for us to meet each other.

ANN McELROY
PRESIDENT



EDITOR.....GINGER LOBB
ASSOCIATE EDITOR.....DOROTHY ROLISON
COORDINATOR.....JACKIE DOWD

RIDDLE MEMORIAL HOSPITAL
MEDIA, PENNSYLVANIA 19063



FIRST CLASS MAIL